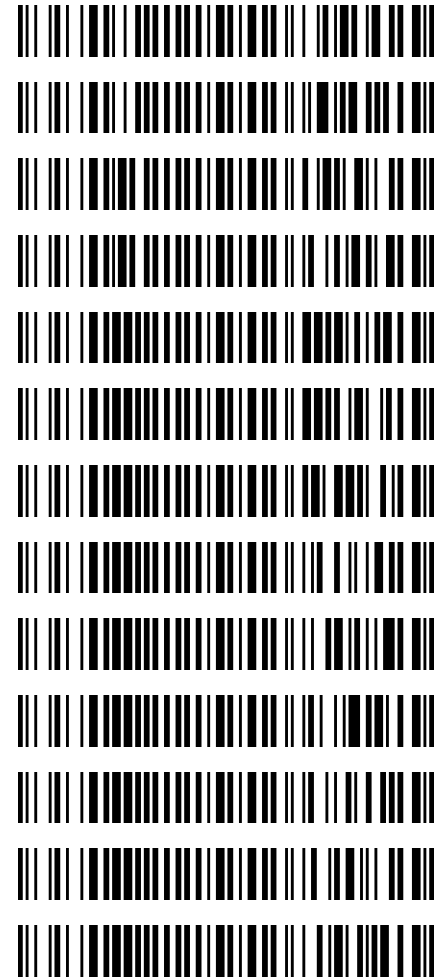


Worklist: 2449

| <u>LAB_CASE</u> | <u>ITEM</u> | <u>TASK_ID</u> | <u>DESCRIPTION</u> |
|-----------------|-------------|----------------|------------------------|
| C2018-0891 | 4 | 117665 | AM 3 Urine Carboxy-THC |
| C2018-1036 | 2 | 117666 | AM 3 Urine Carboxy-THC |
| M2018-2501 | 2 | 117667 | AM 3 Urine Carboxy-THC |
| M2018-2672 | 4 * | 117668 | AM 3 Urine Carboxy-THC |
| P2018-1397 | 1 | 117669 | AM 3 Urine Carboxy-THC |
| P2018-1402 | 1 | 117670 | AM 3 Urine Carboxy-THC |
| P2018-1436 | 1 | 117671 | AM 3 Urine Carboxy-THC |
| P2018-1520 | 2 * | 117672 | AM 3 Urine Carboxy-THC |
| P2018-1523 | 1 | 117673 | AM 3 Urine Carboxy-THC |
| P2018-1555 | 1 | 117674 | AM 3 Urine Carboxy-THC |
| P2018-1560 | 1 | 117675 | AM 3 Urine Carboxy-THC |
| P2018-1564 | 1 | 117676 | AM 3 Urine Carboxy-THC |
| P2018-1591 | 1 | 117677 | AM 3 Urine Carboxy-THC |



*The sample did not inject properly. I was unable to reinject the sample as it was dried out. The sample will be re-extracted.

Data Path : C:\My Files\cshrum\Desktop\Consolidated\Data\URINE\am 3 worklist 2449\
 Data File : THC-PC1.D
 Acq On : 06 Jun 2018 08:43
 Operator : ISP\datastor
 Sample : Spiked Positive c-THC Control
 Misc : c-THC lot # 0497429 in Negative Lot # POC112116; Worklist 2449
 ALS Vial : 32 Sample Multiplier: 1

Integration Parameters: events.e
 Integrator: ChemStation

Method : C:\gcms\1\methods\TOX.M
 Title :

Signal : EIC Ion 371.00 (370.70 to 371.70): THC-PC1.D\data.ms

| peak # | R.T. min | first scan | max scan | last scan | PK TY | peak height | corr. area | corr. % max. | % of total |
|--------|----------|------------|----------|-----------|-------|-------------|------------|--------------|------------|
| 1 | 6.980 | 3 | 16 | 38 | BV | 5609 | 106965 | 100.00% | 86.562% |
| 2 | 7.246 | 79 | 108 | 111 | VV 2 | 484 | 16606 | 15.52% | 13.438% |

Sum of corrected areas: 123571

Signal : EIC Ion 473.00 (472.70 to 473.70): THC-PC1.D\data.ms

| peak # | R.T. min | first scan | max scan | last scan | PK TY | peak height | corr. area | corr. % max. | % of total |
|--------|----------|------------|----------|-----------|-------|-------------|------------|--------------|------------|
| 1 | 6.981 | 3 | 16 | 38 | BV | 2097 | 39944 | 100.00% | 100.000% |

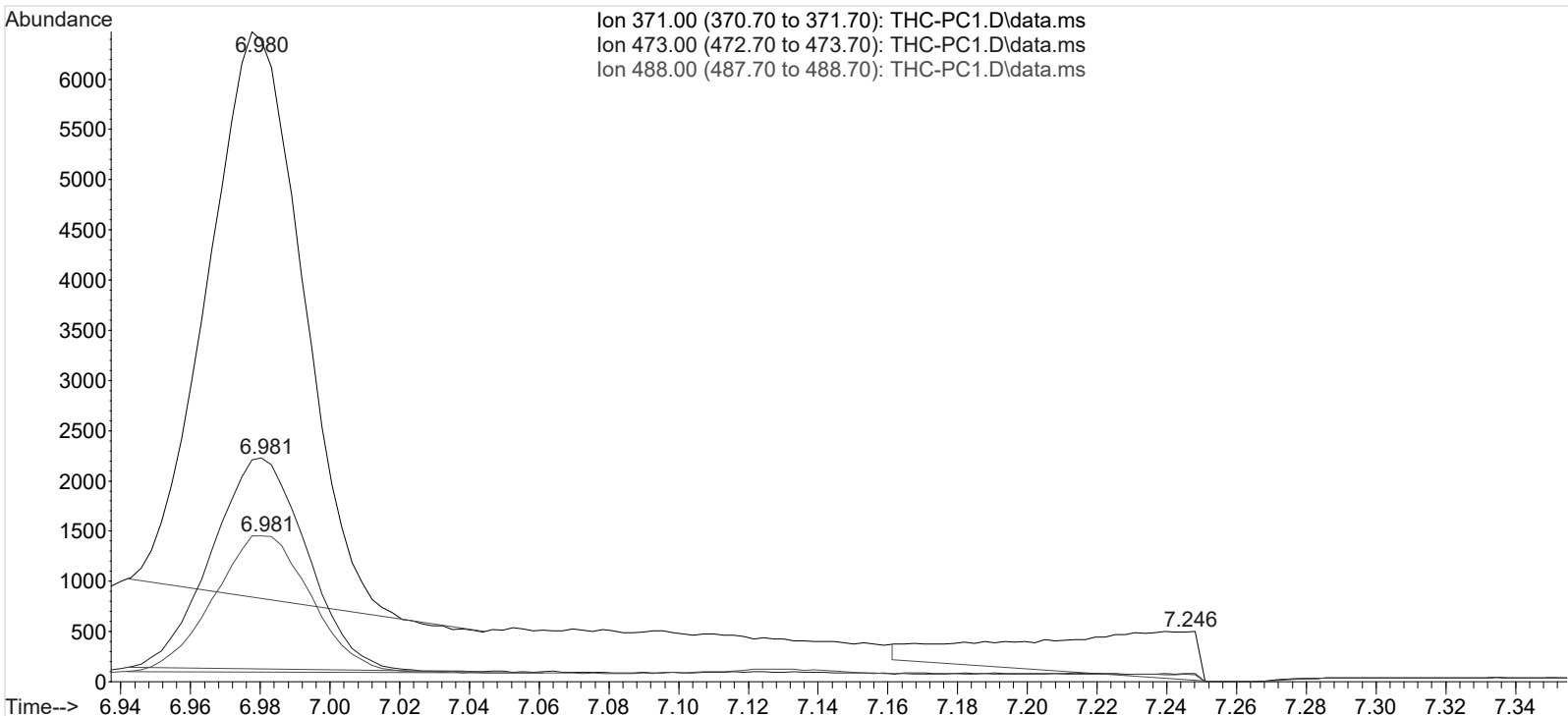
Sum of corrected areas: 39944

Signal : EIC Ion 488.00 (487.70 to 488.70): THC-PC1.D\data.ms

| peak # | R.T. min | first scan | max scan | last scan | PK TY | peak height | corr. area | corr. % max. | % of total |
|--------|----------|------------|----------|-----------|-------|-------------|------------|--------------|------------|
| 1 | 6.981 | 3 | 16 | 44 | BB | 1363 | 26356 | 100.00% | 100.000% |

Sum of corrected areas: 26356

TOX.M Tue Jun 19 15:21:57 2018



Data Path : C:\My Files\cshrum\Desktop\Consolidated\Data\URINE\am 3 worklist 2449\
Data File : THC-PC2.D
Acq On : 06 Jun 2018 14:22
Operator : ISP\datastor
Sample : Spiked Positive c-THC Control
Misc : c-THC lot # 0497429 in Negative Lot # POC112116; Worklist AM #3; Worklist 2449
ALS Vial : 32 Sample Multiplier: 1

Integration Parameters: events.e
Integrator: ChemStation

Method : C:\gcms\1\methods\TOX.M
Title :

Signal : EIC Ion 371.00 (370.70 to 371.70): THC-PC2.D\data.ms

| peak # | R.T. min | first scan | max scan | last scan | PK TY | peak height | corr. area | corr. % max. | % of total |
|--------|----------|------------|----------|-----------|-------|-------------|------------|--------------|------------|
| 1 | 6.974 | 3 | 14 | 49 | PH | 4866 | 104687 | 100.00% | 100.000% |

Sum of corrected areas: 104687

Signal : EIC Ion 473.00 (472.70 to 473.70): THC-PC2.D\data.ms

| peak # | R.T. min | first scan | max scan | last scan | PK TY | peak height | corr. area | corr. % max. | % of total |
|--------|----------|------------|----------|-----------|-------|-------------|------------|--------------|------------|
| 1 | 6.976 | 3 | 15 | 42 | BV | 1698 | 32644 | 100.00% | 100.000% |

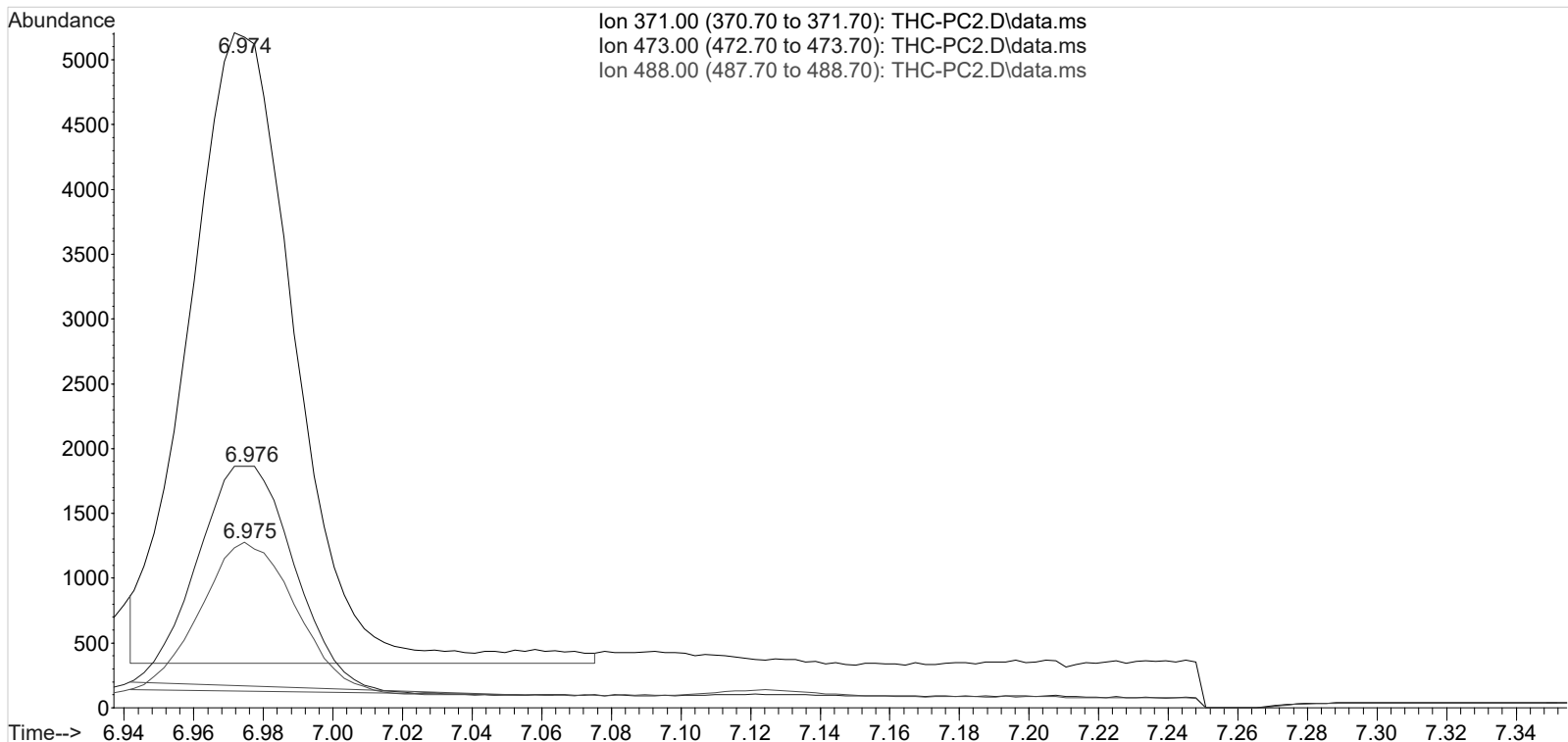
Sum of corrected areas: 32644

Signal : EIC Ion 488.00 (487.70 to 488.70): THC-PC2.D\data.ms

| peak # | R.T. min | first scan | max scan | last scan | PK TY | peak height | corr. area | corr. % max. | % of total |
|--------|----------|------------|----------|-----------|-------|-------------|------------|--------------|------------|
| 1 | 6.975 | 3 | 14 | 45 | BB | 1141 | 21770 | 100.00% | 100.000% |

Sum of corrected areas: 21770

TOX.M Tue Jun 19 15:22:36 2018



Area Percent Report

CS

Data Path : C:\My Files\cshrum\Desktop\Consolidated\Data\URINE\am 3 worklist 2449\
Data File : THC-NC.D
Acq On : 06 Jun 2018 08:32
Operator : ISP\datastor
Sample : Negative Control
Misc : Lot # POC112116; AM #3 Worklist 2449
ALS Vial : 31 Sample Multiplier: 1

None detected. CS

Integration Parameters: events.e
Integrator: ChemStation

Method : C:\gcms\1\methods\TOX.M
Title :

Signal : EIC Ion 371.00 (370.70 to 371.70): THC-NC.D\data.ms

| peak # | R.T. min | first scan | max scan | last scan | PK TY | peak height | corr. area | corr. % max. | % of total |
|--------|----------|------------|----------|-----------|-------|-------------|------------|--------------|------------|
| 1 | 7.246 | 85 | 108 | 111 | VV 2 | 480 | 13961 | 100.00% | 100.000% |

Sum of corrected areas: 13961

Signal : EIC Ion 473.00 (472.70 to 473.70): THC-NC.D\data.ms

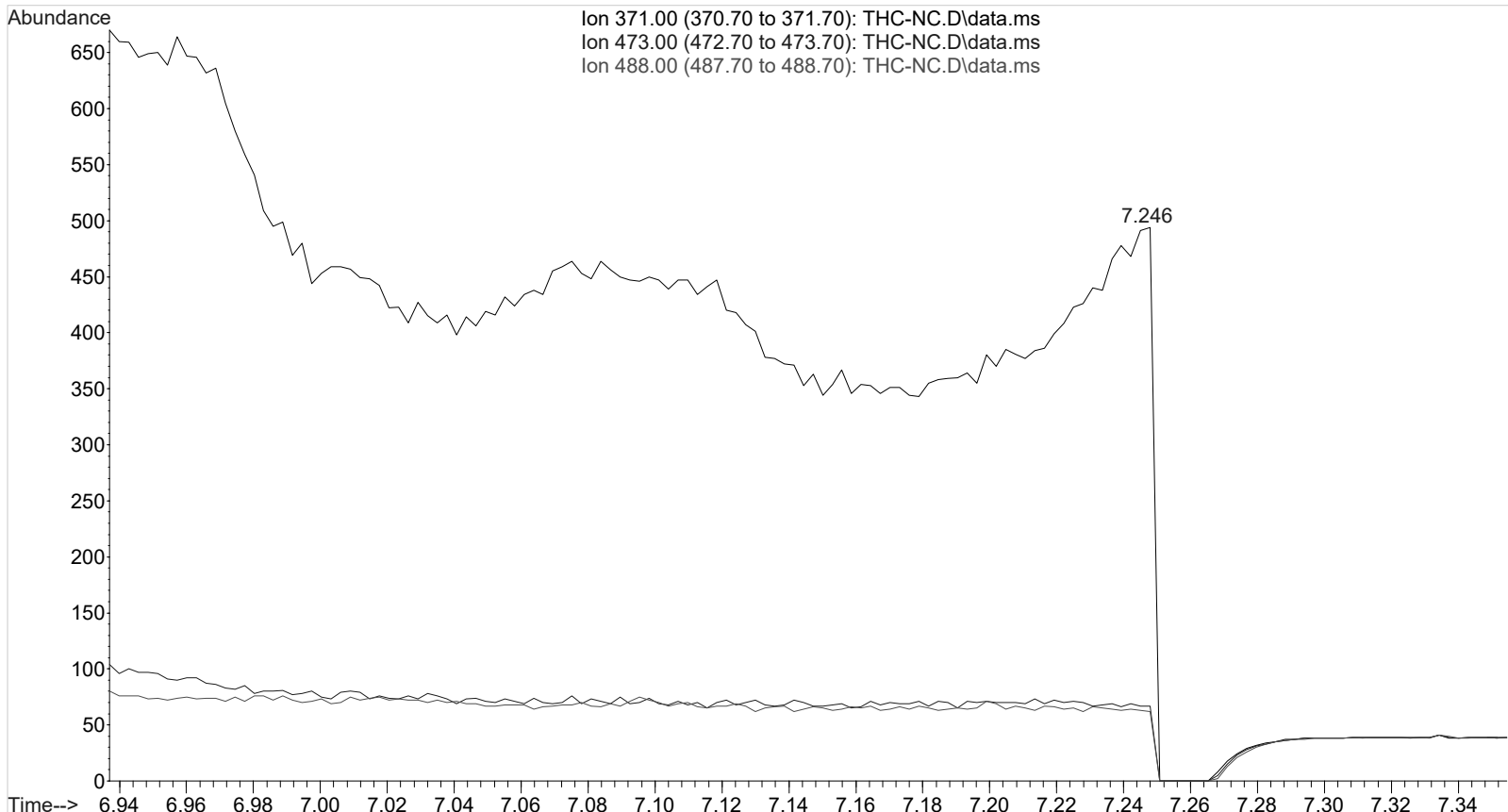
| peak # | R.T. min | first scan | max scan | last scan | PK TY | peak height | corr. area | corr. % max. | % of total |
|--------|----------|------------|----------|-----------|-------|-------------|------------|--------------|------------|
|--------|----------|------------|----------|-----------|-------|-------------|------------|--------------|------------|

No peaks were detected using the method integration parameters!
Signal : EIC Ion 488.00 (487.70 to 488.70): THC-NC.D\data.ms

| peak # | R.T. min | first scan | max scan | last scan | PK TY | peak height | corr. area | corr. % max. | % of total |
|--------|----------|------------|----------|-----------|-------|-------------|------------|--------------|------------|
|--------|----------|------------|----------|-----------|-------|-------------|------------|--------------|------------|

No peaks were detected using the method integration parameters!

TOX.M Tue Jun 19 15:23:20 2018



Data Path : C:\My Files\cshrum\Desktop\Consolidated\Data\URINE\am 3 worklist 2449\
Data File : THC-C3.D
Acq On : 06 Jun 2018 09:06
Operator : ISP\datastor
Sample : Biorad C3 Control
Misc : C3 Lot # 68440; Worklist 2449
ALS Vial : 33 Sample Multiplier: 1

Integration Parameters: events.e
Integrator: ChemStation

Method : C:\gcms\1\methods\TOX.M
Title :

Signal : EIC Ion 371.00 (370.70 to 371.70): THC-C3.D\data.ms

| peak # | R.T. min | first scan | max scan | last scan | PK TY | peak height | corr. area | corr. % max. | % of total |
|--------|----------|------------|----------|-----------|-------|-------------|------------|--------------|------------|
| 1 | 6.979 | 3 | 16 | 35 | BV | 1606 | 30768 | 100.00% | 77.165% |
| 2 | 7.246 | 94 | 108 | 111 | VV 3 | 446 | 9105 | 29.59% | 22.835% |

Sum of corrected areas: 39874

Signal : EIC Ion 473.00 (472.70 to 473.70): THC-C3.D\data.ms

| peak # | R.T. min | first scan | max scan | last scan | PK TY | peak height | corr. area | corr. % max. | % of total |
|--------|----------|------------|----------|-----------|-------|-------------|------------|--------------|------------|
| 1 | 6.980 | 3 | 16 | 43 | BV | 612 | 11801 | 100.00% | 100.000% |

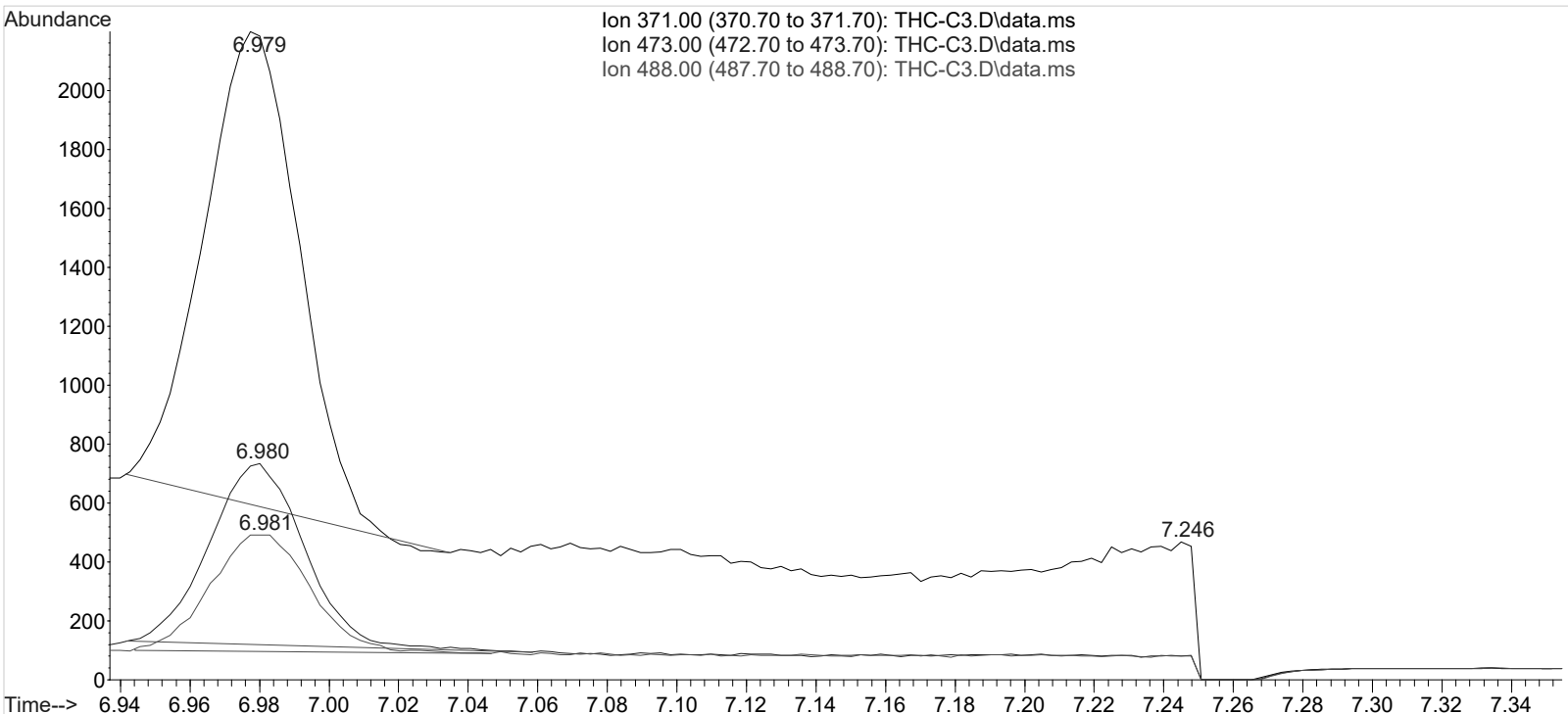
Sum of corrected areas: 11801

Signal : EIC Ion 488.00 (487.70 to 488.70): THC-C3.D\data.ms

| peak # | R.T. min | first scan | max scan | last scan | PK TY | peak height | corr. area | corr. % max. | % of total |
|--------|----------|------------|----------|-----------|-------|-------------|------------|--------------|------------|
| 1 | 6.981 | 3 | 16 | 39 | BV | 397 | 7956 | 100.00% | 100.000% |

Sum of corrected areas: 7956

TOX.M Tue Jun 19 15:22:51 2018



2.4.4 Carboxy-THC QC Calculations (AM #3)_{cs}

Run Date: 6/6/2018

Case Calculations:

Lab Case #: BRC3 68440

| | | |
|--------------------------------|-------|--|
| <i>EIC Ion 371 Corr. Area:</i> | 30768 | |
| <i>EIC Ion 473 Corr. Area:</i> | 11801 | 473:371 Ratio: 0.384 |
| <i>EIC Ion 488 Corr. Area:</i> | 7956 | 488:371 Ratio: 0.259 |

Quality Control Calculations:

Retention Time acceptable range: 6.88 to 7.074

| | <i>1st ctrl</i> | <i>2nd ctrl</i> |
|--------------------------------|-----------------|-----------------|
| <i>EIC Ion 371 Corr. Area:</i> | 106965 | 104687 |
| <i>EIC Ion 473 Corr. Area:</i> | 39944 | 32644 |
| <i>EIC Ion 488 Corr. Area:</i> | 26356 | 21770 |

Approximate minimum corrected area of 371 ion: ~ 21393

| <i>Ratio of 473:371</i> | | | | | | |
|------------------------------------|-----------------|-----------------------------|-----------------|---------------------|-------------|---------------------|
| | <i>1st ctrl</i> | <u>0.373</u> | <i>2nd ctrl</i> | <u>0.312</u> | <i>avg.</i> | <u>0.343</u> |
| | | | | | | |
| <i>Accepted Range</i> (+/- 20%) | | <u>0.274 - 0.411</u> | | | | |

| <i>Ratio of 488:371</i> | | | | | | |
|-------------------------------------|-----------------|-----------------------------|-----------------|---------------------|------------|---------------------|
| | <i>1st ctrl</i> | <u>0.246</u> | <i>2nd ctrl</i> | <u>0.208</u> | <i>avg</i> | <u>0.227</u> |
| | | | | | | |
| <i>Accepted Range</i> (+/- 20%): | | <u>0.182 - 0.273</u> | | | | |

Carboxy-calculation sheet
Revision 0 effective date 10/23/13
Issuing authority: Quality Manager